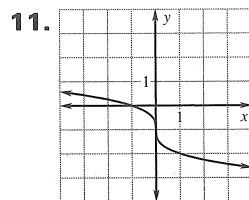
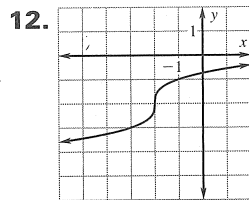


Lesson 6.5, continued



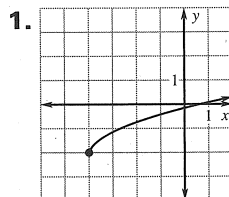
domain and range:
all real numbers



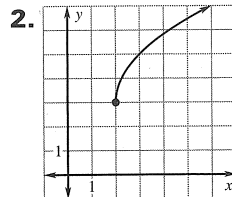
domain and range:
all real numbers

13. domain: $t \geq -273$, range: $V \geq 0$ 14. 87.9°C

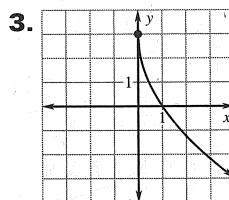
Practice Level C



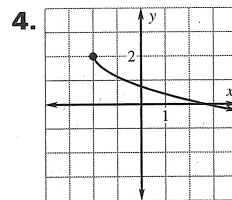
domain: $x \geq -4$,
range: $y \geq -2$



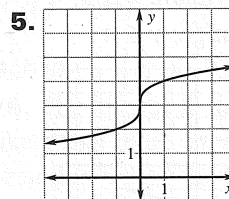
domain: $x \geq 2$,
range: $y \geq 3$



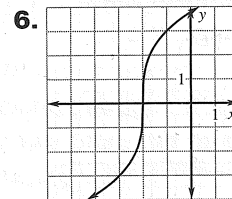
domain: $x \geq 0$,
range: $y \leq 2$



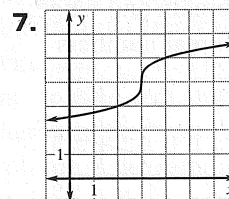
domain: $x \geq -2$,
range: $y \leq 2$



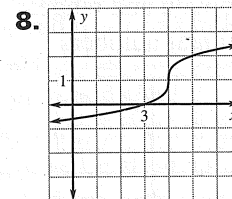
domain and range:
all real numbers



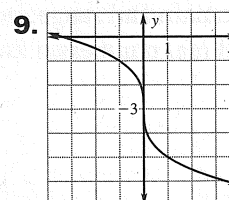
domain and range:
all real numbers



domain and range:
all real numbers

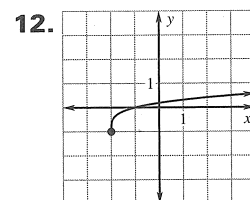


domain and range:
all real numbers

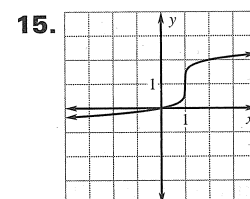


domain and range: all real numbers

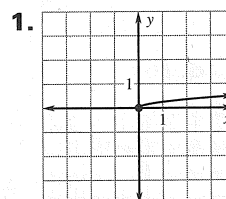
10. (0, 0) and (1, 1) 11. On the interval 0 to 1, the larger the root, the steeper the graph. On the interval 1 to ∞ , the larger the root, the less steep the graph.



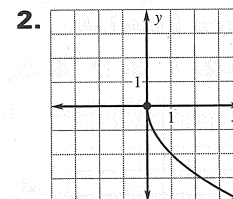
13. (-1, -1), (0, 0) and (1, 1) 14. On the interval -1 to 1, the larger the root, the steeper the graph. On the intervals $-\infty$ to -1 and 1 to ∞ , the larger the root, the less steep the graph.



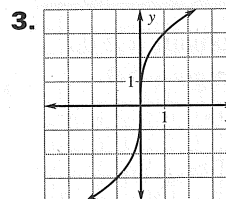
Study Guide



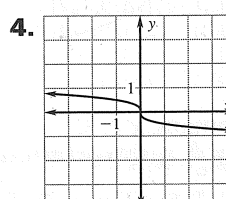
domain: $x \geq 0$,
range: $y \geq 0$



domain: $x \geq 0$,
range: $y \leq 0$

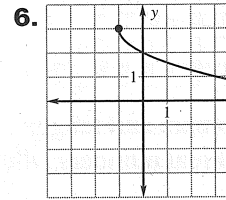


domain: all real numbers,
range: all real numbers



domain: all real numbers,
range: all real numbers

5. $\left(\frac{3}{1.34}\right)^2 \approx 5.01 \text{ ft}$



domain: $x \geq -1$,
range: $y \leq 3$